



AYAA TECHNOLOGY CO.,LTD

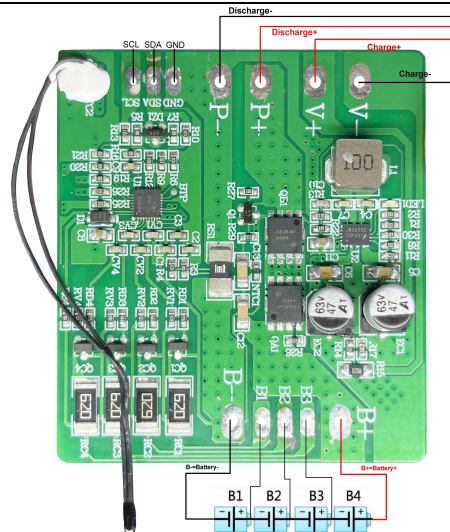
PCM Specifications

Model: PCM-L04S04-L31

Test item (Test at normal temperature 25±2℃)		Criterion
Communication Interface		SMBUS
Voltage	Charging voltage	DC: 16.8V CC/CV (4.2v/Cell) 4s
Capacity	Designing battery capacity (PCM)	/Ah
Supply Current	Normal operating mode current; Fuel gauge in NORMAL mode. ILOAD > Sleep Current	≤800uA
	Low-power operating mode current; Fuel gauge in SLEEP mode. ILOAD < Sleep Current	≤350 uA
	Maximal continuous charging current	1A
	Maximal continuous discharging current	4A
	Balance current for single cell	56±10mA
Over-charge Protection (single cell)	Balance voltage for single cell	3.5±0.10V
	Over charge detection voltage	4.25±0.05V
	Over charge detection delay time	0.5S—2S
	Over charge release voltage	4.10±0.1V
Over discharge protection (single cell)	Over discharge detection voltage	2.8±0.05V
	Over discharge detection delay time	0.5S—2S
	Over discharge release voltage	3.0±0.1V
Current protection (Battery pack)	charge current protection	2±1A
	Detection delay time	0.5S—2S
	Discharge Over current protection1	12±1A
	Detection delay time	1S—3S
	Discharge Over current protection2	14±1A
	Detection delay time	0.5S—2S
	Release condition	Cut load, Auto Recovery
Short protection	Detection condition	Exterior short circuit
	Detection delay time	200-600us
	Release condition	Cut load
Resistance	Main loop electrify resistance	≤ 60mΩ
Temperature	discharge temperature protection	-10~+65℃
	charge temperature protection	0~+60℃
	Operating Temperature Range	-40~+85℃
	Storage Temperature Range	-40~+125℃

SIZE: L60*W55 *T9.5mm

NTC:10K NTC Temperature switch; /℃ (the batteries temperature) Weak current switch; / Activation Method: /



Prepared: Emily 2023-11-30

Checked:

Approved: