



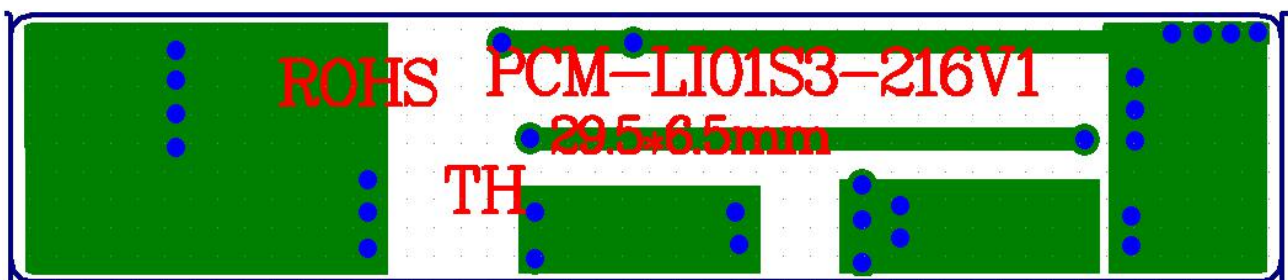
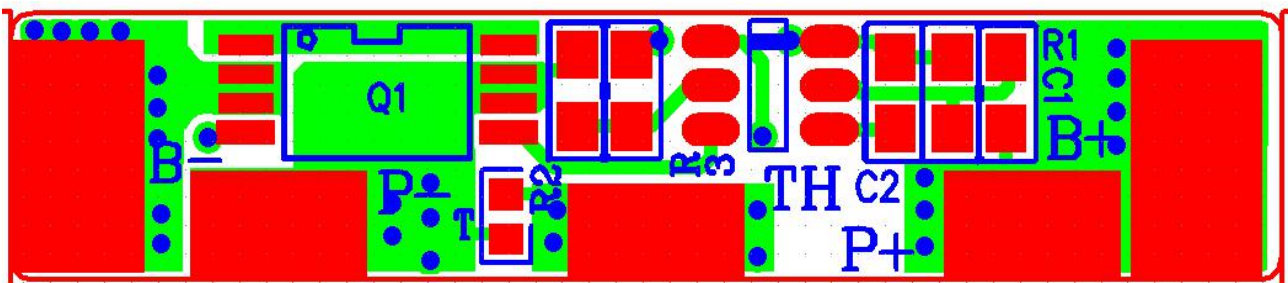
AYAA TECHNOLOGY CO.,LTD
PCM Specifications

Model: PCM-LI01S3-216V1 (LI-1S2.5A) ver: A

Test item (Test at normal temperature 25±2°C)		Criterion
Voltage	Charging voltage	DC: 4.2V CC/CV (4.2v/Cell) 1s
Capacity	Designing battery capacity (PCM) 26650-4S2P	/
Supply Current	Normal operating mode current; Fuel gauge in NORMAL mode. ILOAD >Sleep Current	≤7uA
	Maximal continuous charging current	2.5A
	Maximal continuous discharging current	2.5A
	Balance current for single cell	/
Over-charge Protection (single cell)	Balance voltage for single cell	/
	Over charge detection voltage	4.25±0.05V
	Over charge detection delay time	0.5S—2S
	Over charge release voltage	4.05±0.1V
Over discharge protection (single cell)	Over discharge detection voltage	2.8±0.05V
	Over discharge detection delay time	10—200mS
	Over discharge release voltage	3.0±0.1V
Current protection (Battery pack)	ChargeOver current detection current	/
	Detection delay time	/
	Discharge Over current detection current	5±2A
	Detection delay time	5ms—20ms
	Release condition	Cut load,Auto Recovery
Short protection	Detection condition	Exterior short circuit
	Detection delay time	200-600us
	Release condition	Cut load
Resistance	Main loop electrify resistance	≤65mΩ
Temperature	Operating Temperature Range	-40~+85°C
	Storage Temperature Range	-40~+125°C

SIZE: L30 *W6 *T2 mm

NTC:/ Temperature switch: / Weak current switch: / Activation Method: /



Prepared: Hardy 2019-2-27

Checked:

Approved: