



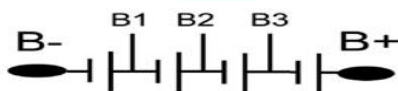
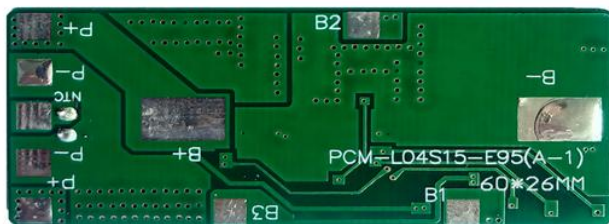
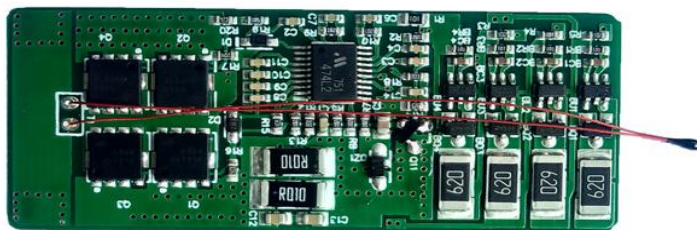
AYAA TECHNOLOGY CO.,LTD
PCM Specifications

Model: PCM-L04S15-E95 (4S) ver: A

Test item (Test at normal temperature 25±2℃)		Criterion
Voltage	Charging voltage	DC: 16.8V CC/CV (4.2v/Cell) 4s
Capacity	Designing battery capacity (PCM)	/
Supply Current	Normal operating mode current: Fuel gauge in NORMAL mode. ILOAD > Sleep Current	≤30uA
	Maximal continuous charging current	7A
	Maximal continuous discharging current	7A
	Balance current for single cell	42±10mA
Over-charge Protection (single cell)	Balance voltage for single cell	4.20V±0.05V
	Over charge detection voltage	4.25±0.05V
	Over charge detection delay time	0.5S—2S
	Over charge release voltage	4.15±0.1V
Over discharge protection (single cell)	Over discharge detection voltage	2.75±0.1V
	Over discharge detection delay time	150—300mS
	Over discharge release voltage	3.0±0.1V
Current protection (Battery pack)	ChargeOver current detection current	/
	Detection delay time	/
	Discharge Over current detection current	20±3A
	Detection delay time	50ms—150ms
	Release condition	Cut load, Auto Recovery
Short protection	Detection condition	Exterior short circuit
	Detection delay time	200-800us
	Release condition	Cut load
Resistance	Main loop electrify resistance	≤30mΩ
Temperature	Operating Temperature Range	-40~+85℃
	Storage Temperature Range	-40~+125℃

SIZE: L60*W26*T4mm

NTC: 10K Temperature switch: / Weak current switch: / Activation Method: /



Prepared: Emily 2020-3-2

Checked:

Approved: